



MONTHLY MEMBERSHIP PROGRESS REPORT

District 22 C

Results as of: 04/30/2019

GMT: MAHESH CHITNIS

LOCATION MARYLAND

GMT CA

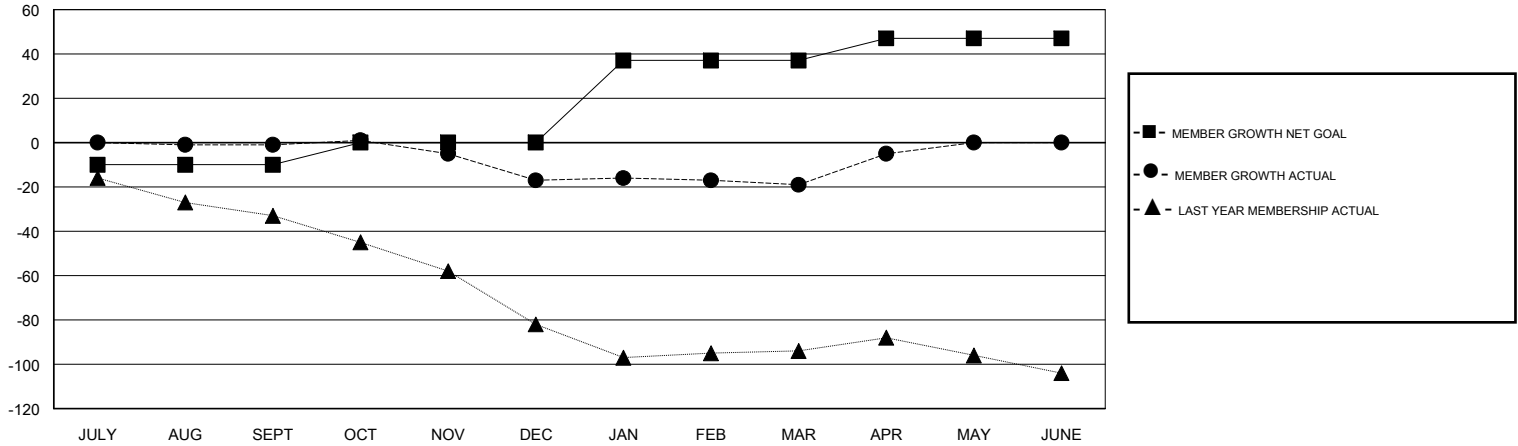
Clubs			
RESULTS FOR 2018-2019			
QUARTER	NEW CLUB GOAL	NEW CLUBS	DROPPED CLUBS
JULY/AUG/SEPT	0	0	0
OCT/NOV/DEC	0	0	0
JAN/FEB/MAR	1	0	0
APR/MAY/JUNE	0	0	0

Members			
RESULTS FOR 2018-2019			
QUARTER	MEMBER GROWTH NET GOAL	MEMBER GROWTH ACTUAL	DROPPED MEMBERS ACTUAL (including transfers)
JULY/AUG/SEPT	-10	18	14
OCT/NOV/DEC	10	20	33
JAN/FEB/MAR	37	16	14
APR/MAY/JUNE	10	20	6

GOALS AND ACTUAL NEW CLUBS CUMULATIVE



GOALS AND ACTUAL MEMBERS CUMULATIVE



DROPPED CLUBS: 0	19 CLUBS OF 46 ADDED 1 OR MORE NEW MEMBERS	<u>GENDER DISTRIBUTION</u> MALE 893 (67.50%) FEMALE 430 (32.50%) Women Percentage Fiscal Year Goal: 40%
<u>DROPPED MEMBERS</u> DECEASED 21 CLUB CANCELLED 0 OTHER 46 TOTAL 67	CLICK HERE FOR CUMULATIVE MEMBERSHIP DATA	TOTAL FAMILY UNIT MEMBERS 205 FAMILY MEMBERS PAYING HALF DUES 110